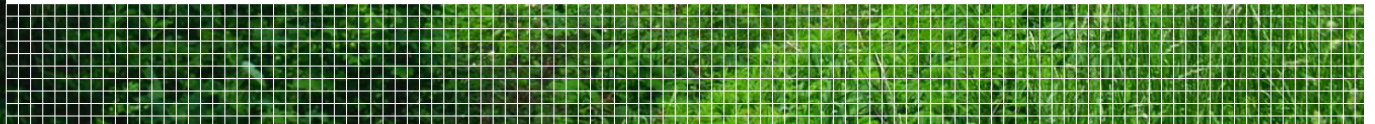


The net of the PCRs for food

Filippo Sessa – Life Cycle Engineering

Massimo Marino – The International EPD system



The PCR structure is CPC based

CPC CODES

Section 01 – Agricultural products

Group: 011 – Cereals

Class 0111 (*Wheat*)

Class 0112 (*Maize*)

Class 0113 (*Rice*)

Class 0114 (*Sorghum*)

Class 0115 (*Barley*)

Class 0116 (*Rye*)

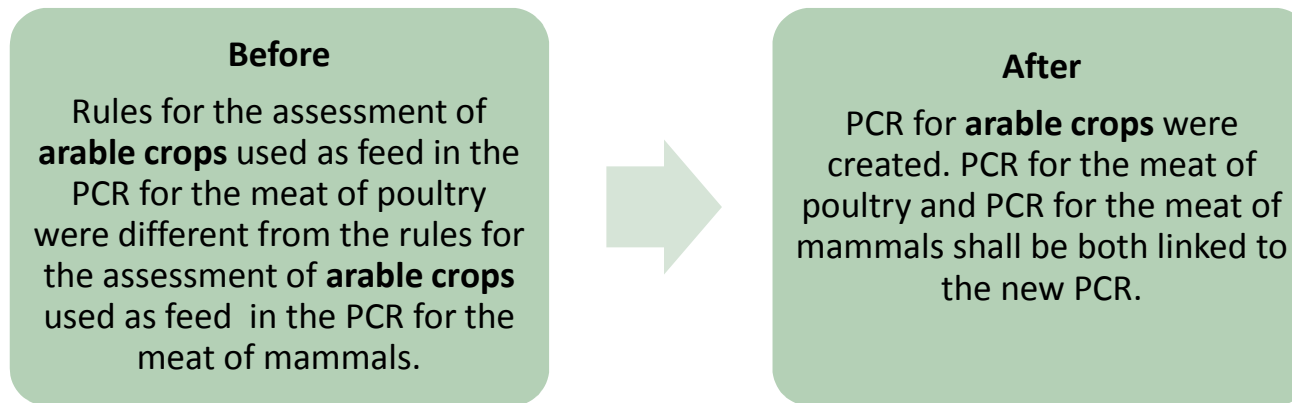
Class 0117 (*Oats*)

Class 0118 (*Millet*)

Class 0119 (*Other cereals*)

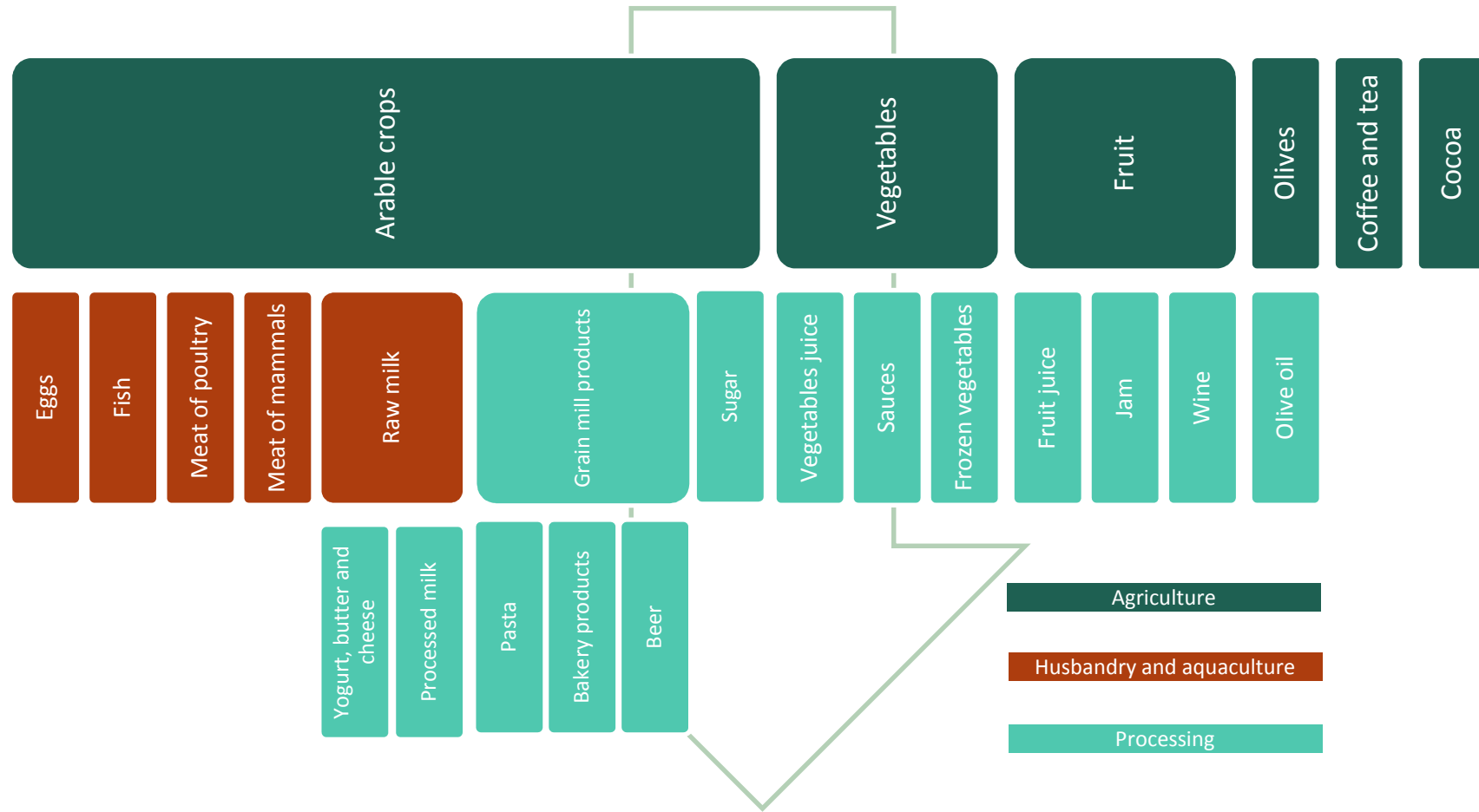
- CPC (Central Product Classification) is an UN-based scheme for statistical division of product categories and service types. All in all, the CPC scheme consists of 10 sections, 71 divisions, 294 groups, 1162 classes and 2093 subclasses
- The vertical hierarchic separation in the CPC structure enables a similar separation to be made of the rules in the PCR document having the advantage of harmonization between different products with principally the same origin.

The need of harmonization: the case of the food products



- There is a need to coordinate the system of the PCRs in order to avoid inconsistencies between different PCRs.
- The first step was to harmonize the system of the PCRs for food → if a raw material is used for different products, the impacts of such raw material shall be assessed according to the same methodology

The net of PCRs for food



PCR for arable crops

INCLUDED CPC CLASSES

Group: 011 – Cereals

- 0111 (*Wheat*)
- 0112 (*Maize*)
- 0113 (*Rice*)
- 0114 (*Sorghum*)
- 0115 (*Barley*)
- 0116 (*Rye*)
- 0117 (*Oats*)
- 0118 (*Millet*)
- 0119 (*Other cereals*)

Group: 014 - Oilseeds

- 0141 (*Soya beans*)
- 0142 (*Groundnuts in shell*)
- 0143 (*Cottonseed*)
- 0144 (*Other oilseeds*)

Group: 017 - Pulses (dried leguminous vegetables)

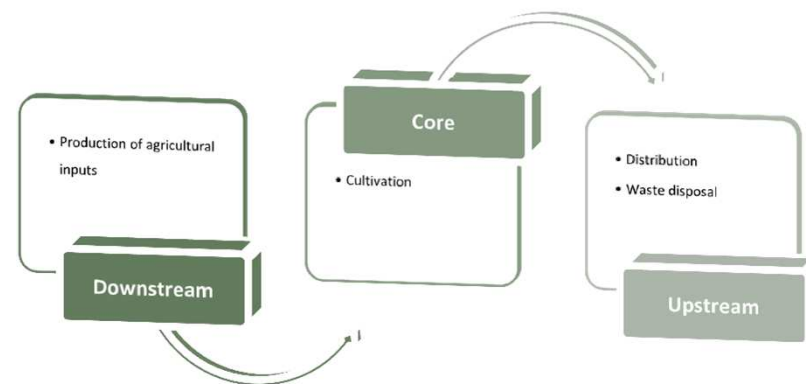
- 0170 (*Pulses*)

Group: 018 – Sugar crops

- 01801 - *Sugar beet*

Group: 019 - Forage products, fibres, living plants, cut flowers and flower buds, unmanufactured tobacco, and natural rubber

- 01911 (*Maize for forage and silage*)
- 01912 (*Alfalfa for forage and silage*)
- 01913 (*Cereal straw, husks, unprepared, ground, pressed, or in the form of pellets*)

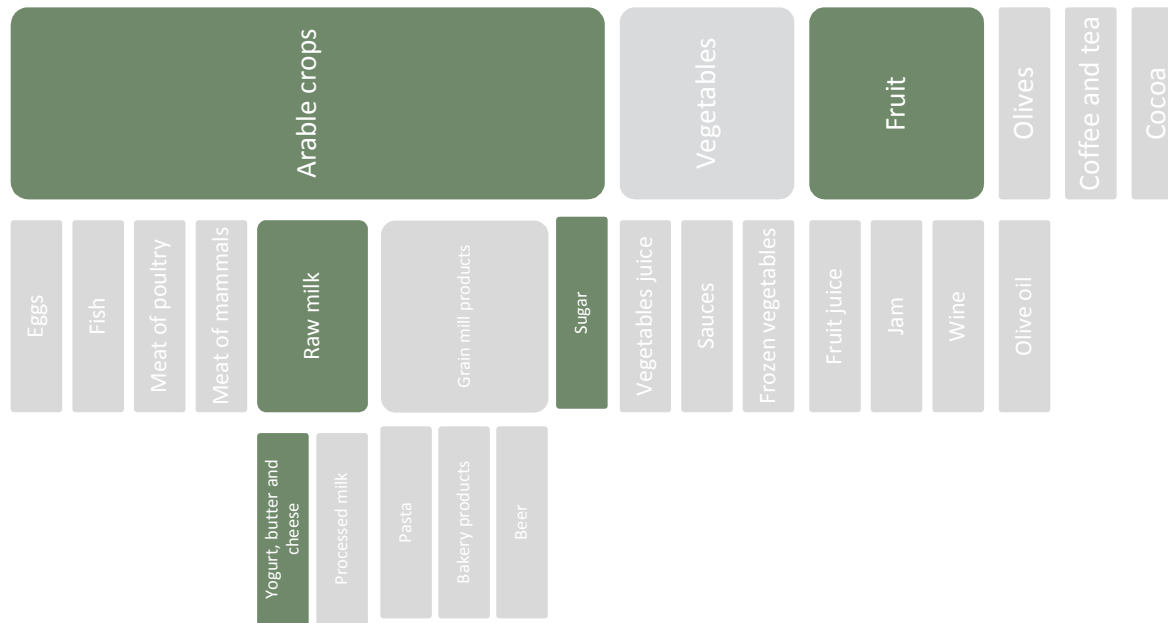


CONTRIBUTORS

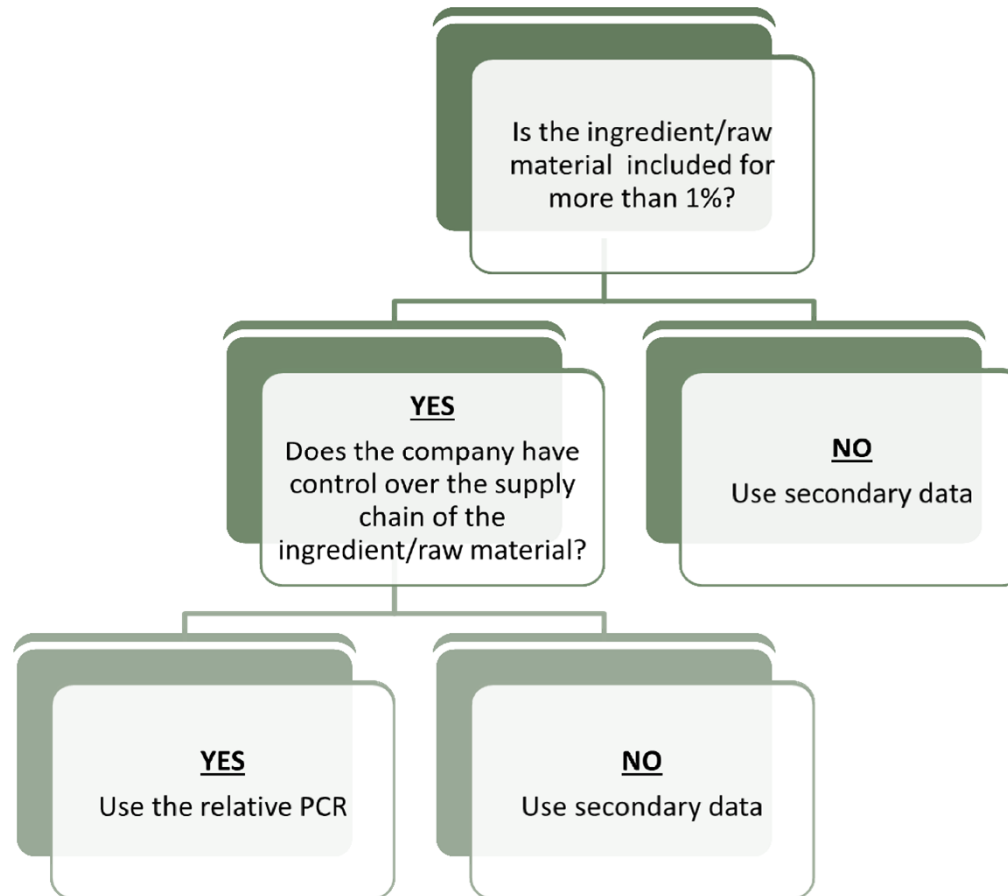
- Filippo Sessa**, Life Cycle Engineering
- Nicola Robinson**, McDonald's Europe
- Pauline Maupu**, InVivo Group
- Amandine Berthoud**, InVivo Group
- Frank Brentrup**, Yara
- Pekruhn Margit**, Lieken
- Chrystel Bogiraud**, East Balt France

Example

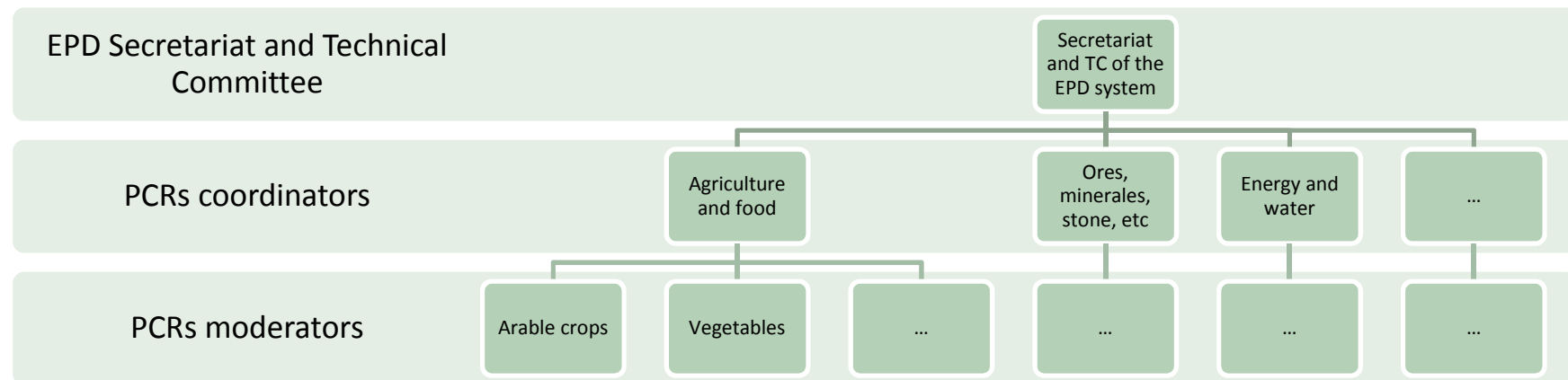
If I am a yogurt producer and I want to prepare an EPD for a fruit yogurt. Of course the EPD will be based on the *PCR for butter, cheese and yogurt*, but are there other PCRs that I have to consider?



General rules for the use of PCRs



PCRs development - How could it work?

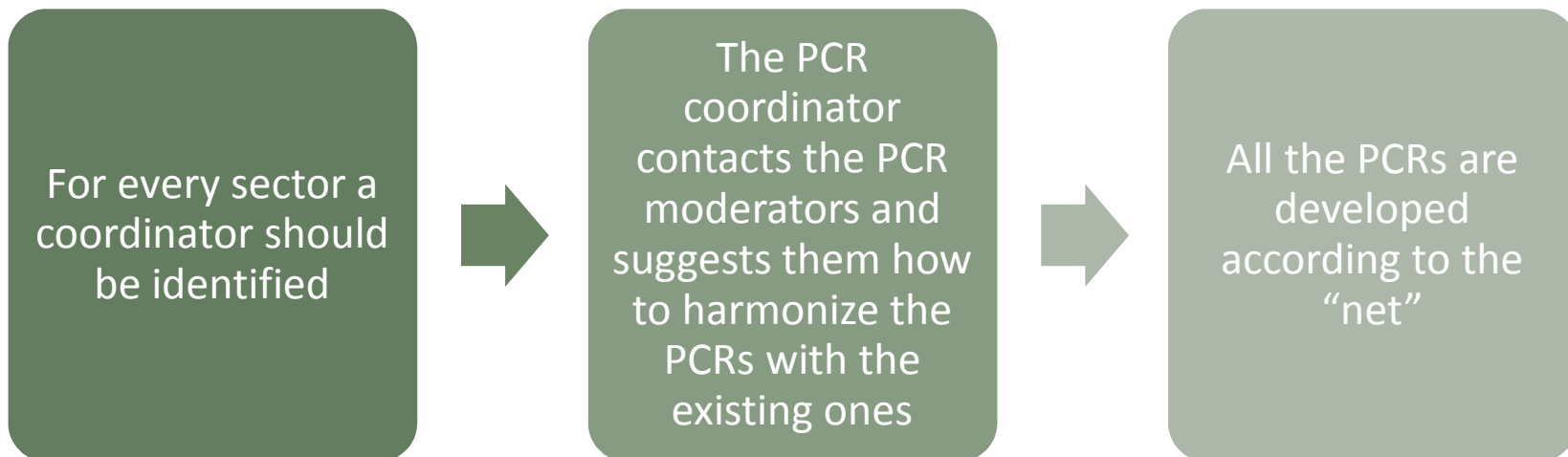


The PCR moderator announces his intention to develop some PCRs

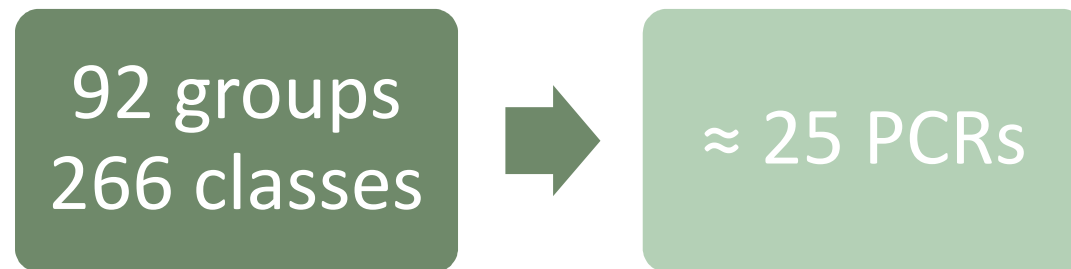
The secretariat connects the PCR moderator with the PCR coordinator of the section of interest

The PCR coordinator makes sure that the PCRs in development are correctly linked with the existing ones

Next steps



The results



- With a relatively small number of PCRs all the category of agri-food products are covered
- Harmonization between different products with principally the same origin.

**Thank you for
your attention**